

Useful numbers

Consumer Helpline
(Pre- & Post-Sales)
Tel: 08705 266241
Fax: 01905 752741

Service
Tel: 08457 256206
Fax: 01905 757536

Literature
Tel: 01905 752556
or download instantly from our website

Renewables Phone Team
Tel: 01905 752780
email: renewable.energy@uk.bosch.com

www.worcester-bosch.co.uk



Worcester, Bosch Group is a brand name of Bosch Thermotechnology Ltd.
This leaflet is accurate at the date of printing, but may be superseded and should be disregarded if specification and/or appearances are changed in the interest of continued improvement. The statutory rights of the consumer are not affected.
Part No: 8 716 109 642 Issue: C 11/08



Worcester, Bosch Group,
Cotswold Way, Warndon,
Worcester WR4 9SW
Tel: 01905 754624 Fax: 01905 754619



Dedicated to heating comfort

Gas-fired boilers from Worcester.
They reduce your gas bill.
And your carbon footprint.
They're any home's best friend.





Sheer comfort:
knowing that every one of
Worcester's Greenstar boilers
can save you money.

Contents

Why choose Worcester? A company built on expertise3

Reliability Products you can depend on – always5

Efficiency What over 90% efficiency means to you.....7

Environment How Worcester is leading the way in eco-friendly heating9

Home heating made simple All the info you'll need to understand the options11

Choosing the right boiler A simple guide to help make the right choice for you13

Our range Check out our full range of high efficiency condensing boilers15

In control Find the control system that suits you and your home23

Product specification Our range in detail25

At your service How Worcester can do more than heat your home26

Upgrade to sustainable heating Solar, ground source and air source heating systems27



Dedicated to heating comfort

Worcester. Trusted for over half a century.

Worcester is the choice of thousands of quality- and value-conscious people all over the UK – and it's the choice of the heating industry too.

Installers themselves voted Worcester's Greenstar boilers CORGI's Boiler of the Year in 2005, 2006 and 2007.

Industry experts also recognised the Greenskies solar thermal panels, making them CORGI's Energy Efficient Product of the Year in 2007 and 2008.

All of which gives you the reassurance of knowing that when you invest in a Worcester product, its quality is endorsed by the professionals.



Quality is the bedrock of the Worcester brand. It always has been and it always will be.

"Our commitment to quality hasn't changed since 1962."

Since 1962, when Worcester pioneered domestic oil-fired boilers, the company's commitment to excellence hasn't changed. And that commitment has only strengthened since Worcester became a part of the Bosch Group – one of the world's leading names in innovative technology.

Today, many years and thousands of boilers later, we are the market leader in domestic heating and hot water systems, employing 2000 people at our headquarters and manufacturing plants in Worcester and at Clay Cross in Derbyshire – including a nationwide network of over 300 Service Engineers and over 80 technically-trained Field Sales Managers. It makes Worcester a name that stands for reliability, quality, efficiency and value for money.

So although buying a new boiler might seem daunting, there's no need to worry. Worcester is a name you can trust.



A history of innovation: Worcester introduced the combi boiler to the UK in the 1970s.



Proud origins: the original Worcester factory.



**SAVING
BRITAIN
MONEY**

Wherever you live, Worcester keeps it feeling like home.

Wherever you live, it only feels like home if it's warm and comfortable.

Which is why a reliable boiler is so important. With Worcester, you have a boiler you can rely on year in, year out.

They're designed and built to exacting standards, and constructed with only the highest quality materials. Each component is tested rigorously to provide long-term reliability.

So with annual maintenance, a Worcester boiler will give you many years of dependable service, providing you and your family with warmth, comfort and all-important peace of mind.

The Bosch pedigree

The Bosch name stands for quality, reliability, innovation and service – a reputation that's been built up over a century of working to the most demanding benchmarks.

As a member of the Bosch Group, Worcester shares that approach, and draws on Bosch's wealth of expertise to develop innovative products you can rely upon.



Dedicated to heating comfort

If your boiler is 10 years old,
it's not as efficient as it could be.



**SAVING
BRITAIN
MONEY**

It's surprising but true: a boiler that's just 10 years old could be costing you 30%* more in fuel than a Worcester Greenstar.

So with the instability of fuel prices, there's never been a better time to think about changing your boiler.

How can a Worcester boiler reduce my fuel bills?

Every boiler in the Worcester range is A-rated for efficiency, meaning it turns over 90% of the fuel it uses into heat.

Compare that to older boilers, which are as little as 50% efficient. That means 50% of the fuel you pay for literally goes up the chimney.

Many modern boilers are still only 70-75% efficient – so installing just any new boiler is no guarantee of money-saving efficiency.

When you factor in the quality and durability Worcester is renowned for, an award-winning Greenstar boiler makes perfect sense.

Worcester Energy Houses

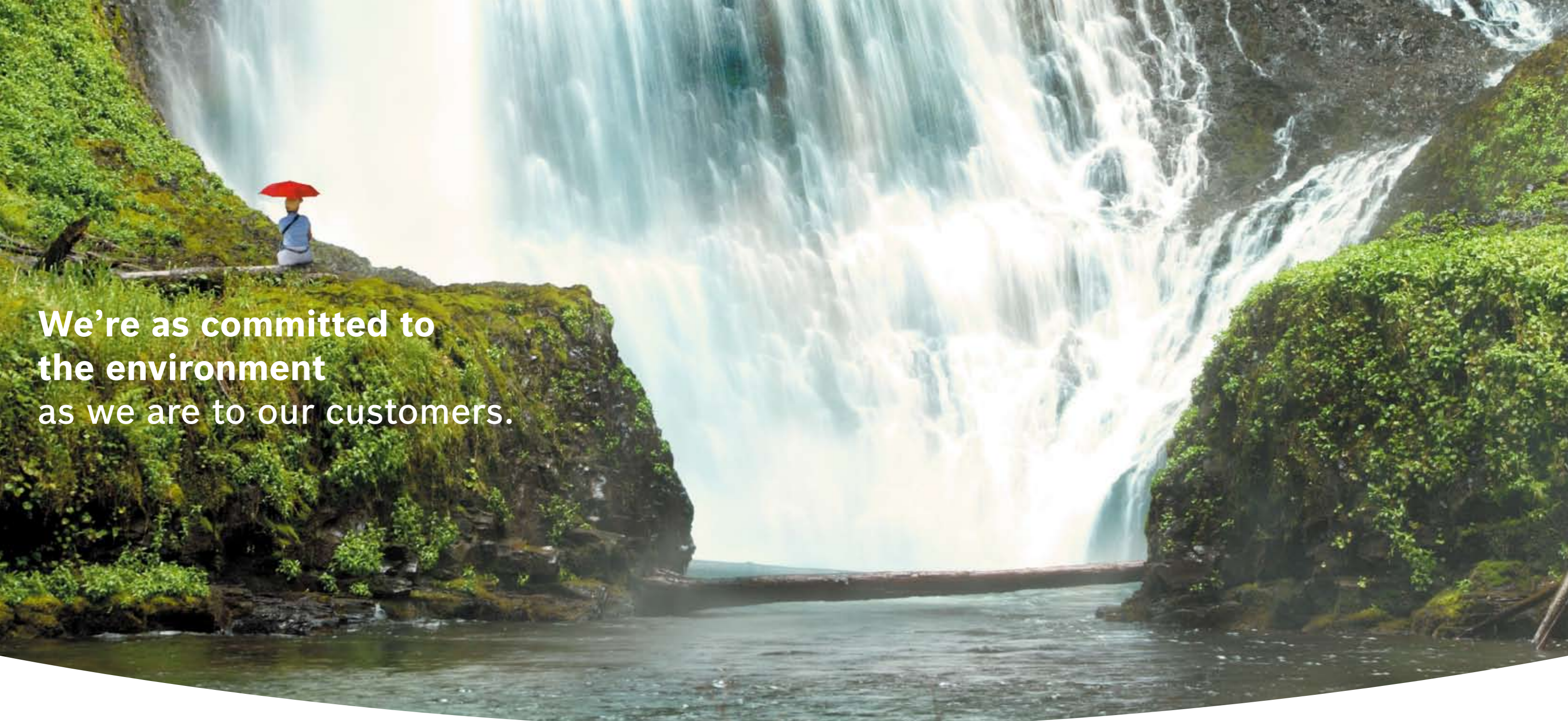
You can see how Worcester products could make a difference to your life, your fuel bills and the environment at our Energy Houses website. The site shows working examples of Worcester heating and hot water systems designed for people with a range of different needs.

They let you see first hand how our products can reduce your energy consumption. Visit our site at www.worcester-bosch.co.uk/energyhouses

"A Worcester condensing boiler can reduce your fuel bill by 30%. It's just one of the ways we're saving Britain money."*



*Source: Energy Saving Trust.



We're as committed to the environment as we are to our customers.

"The long-term protection of the environment is an integral part of the way Worcester and Bosch work now and in the future."

Whether it's energy efficient boilers, or sustainable heating solutions like Solar water heating panels, Worcester's commitment to the environment goes back many years. In 2000, Worcester established an industry awards scheme that recognises and celebrates environmental innovation.

The Environment 2020 Awards is just one of the ways we're demonstrating our passion for ecological responsibility. The greatest contribution we make is by ensuring every

one of our products is as fuel efficient as technology will allow, or uses completely sustainable fuel like solar energy or air. Worcester is also behind a forward-looking scheme to educate younger generations on environmental issues. A free book, 'Picture a Greener Future', is available from our website and, through a fun story, shows how we can all reduce our energy consumption and shrink our carbon footprint.

We're also working with the Woodland Trust to help reduce our own carbon footprint. For every Worcester boiler installed, we'll plant a tree in the UK. All you need to do is register your details on our website and we'll do the rest.

Making a difference

We think we've made a significant difference to the UK's effect on the environment: since 1996, the combined energy savings of all the products we've sold have helped reduce Bosch Thermotechnology's carbon footprint by 20%.

As we continue to develop new and innovative energy-efficient products, we fully intend to make even more of a difference to our planet.

"Since 1996, Bosch Thermotechnology has reduced its carbon footprint by 20%."

Home heating made simple.



"Worcester technology is incredibly advanced – but that doesn't mean it can't be understood."

Home heating systems can seem complex, but the basics aren't too difficult to understand. Here you'll find a few answers to some common questions, as well as an insight into some of the ways a Worcester boiler uses advanced technology to do more than simply heat your home.

What is a combi boiler?

Combi is short for 'combination'. It refers to the way this type of system serves as both a central heating boiler and a hot water heater. That means there's no need for a water tank as hot water is provided on demand. As well as saving the space normally taken up by a water tank (in the loft or airing cupboard), a combi boiler saves on hot water costs as well as giving you hot water at mains pressure.

What is a regular boiler?

This typically forms part of a conventional heating system, and is linked to a series of water tanks that feed the boiler and radiators. Storing hot water is key to this system, so unlike a combi, a plentiful supply of hot water is always available. Space in the loft and airing cupboard is required for tanks.

What is a system boiler?

Like a regular system, this uses stored hot water. But because the water is pumped from the boiler straight to the radiators and hot water tank, it's a faster, more economical system. What's more, many of the components of the system are built-in, making it easier, quicker and more affordable to install.

What is a condensing boiler?

A condensing boiler is one which makes more of the energy it runs on – by using the heat normally expelled through the flue. By converting over 90% of the fuel used (rather than just 50% in the case of some old boilers) a condensing boiler makes your fuel go further – saving you money and helping to reduce your carbon footprint.

Since 1st April 2005 it is a requirement of the Building Regulations that any replacement or new gas-fired boiler must be a condensing boiler.*

What is a WAI?

It stands for Worcester Accredited Installer. These are installers that have been trained and assessed by Worcester to reach a level of expertise that meets our own high standards.

We can help you find a WAI in your area, so you can have as much confidence in your installer as you do in your boiler. Just call us on 08457 256 206 or visit us at www.worcester-bosch.co.uk/findaninstaller

What is CORGI?

CORGI is the Council for Registered Gas Installers, the UK's national watchdog for gas safety. Always ensure your installer is CORGI-registered before you ask them to quote or start any work – they'll have had to prove they're suitably qualified and can work to a high standard.

*Exceptions can apply.

Relax. Finding the right boiler isn't as hard as you might think.



The information on this page should help you determine which kind of boiler is right for you – and it's actually quite a simple process. You just need to weigh up the needs of your household, the size of your home and a few other considerations and you should have an answer.

Make the right choice

It's important that you find out as much as you can before you buy a boiler, so here are a few ways you can get the information you need. You'll find a helpful tool on our website at www.worcester-bosch.co.uk/findaboiler

It'll help you get an idea of the specific boiler you need, just by answering a few simple questions.

You can also use the table opposite to answer some immediate questions about the type of boiler you need: combi, regular or system.

*"Yes, it's a big decision.
But it needn't be as scary
as you might think."*

Consideration	Most suitable boiler
You want to use your loft space for a room conversion or other purpose	Combi
You live in a flat or bungalow (i.e. have very little or no roof space)	Combi
Your home has more than 2 bathrooms	Regular or System
Your mains water pressure is low	Regular or System
You want to replace an old boiler to improve an existing conventional central heating system	Regular, System or Combi
There is a need to have hot water available immediately, without waiting for it to heat up	Combi

Controls

Controls can help make your high-efficiency boiler even better at saving energy. As well as helping you control when your heating and hot water comes on and is switched off, it can also accurately regulate the temperature in your home.

Planning permission

In April 2005, Building Regulations were changed. They now state that it is a legal requirement to install a condensing boiler, unless an exemption certificate is obtained. The only types of boiler Worcester manufactures are A-rated high-efficiency condensing boilers.

The lifetime of your boiler

Worcester Greenstar oil-fired boilers are engineered to last – meaning you can think ahead about how your heating and hot water needs may change. Whether you have a growing family or are thinking about adding Solar water heating panels in the future, you can choose the right Greenstar boiler now, secure in the knowledge that it will still be performing if your circumstances change.

**Source: Energy Saving Trust.*

EPCs and HIPs

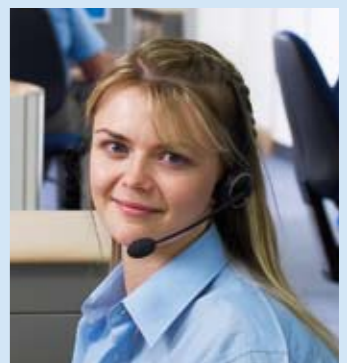
The Energy Performance Certificate (EPC) is part of the new Home Information Pack (HIP), which is now required by anyone selling a home. It rates a home's energy efficiency, giving potential buyers an idea of how green – and how costly – their new home will be. It is widely recognised that installing a high-efficiency condensing boiler will improve your home's rating.

CO₂ and NO_x Emissions

As well as A-rated efficiency, a Worcester condensing boiler delivers dramatically reduced emissions of both CO₂ and NO_x (nitrogen oxide). As domestic boilers currently account for 21%* of the UK's total CO₂ emissions, that makes a significant contribution to the battle against climate change.







All Worcester Greenstar boilers are within class 5 for NO_x emissions meaning they are in the lowest of the 5 categories.

*Need to discuss your decisions with us?
Call our customer service team on 08457 256 206.
To find out more online, visit us at www.worcester-bosch.co.uk*





Worcester Greenstar condensing regular boiler range.

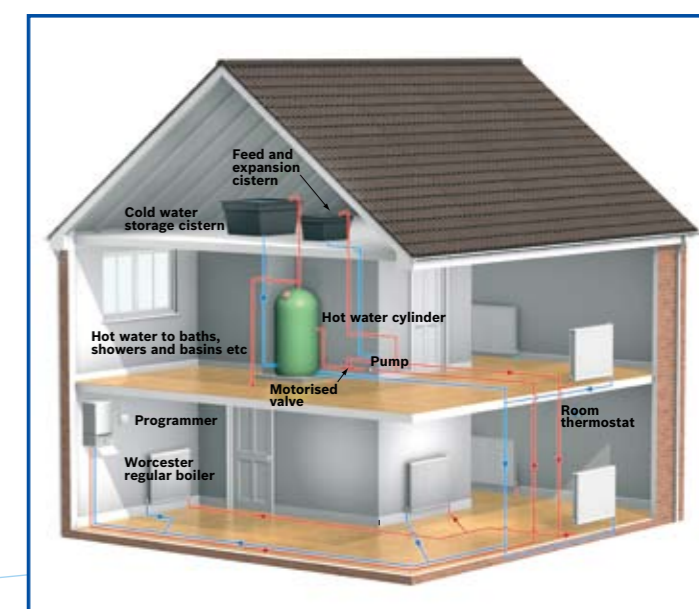
Boiler	CH output	Solar compatible
Greenstar Ri series		
Greenstar 12Ri	4 – 12kW	
Greenstar 15Ri	5 – 15kW	
Greenstar 18Ri	6 – 18kW	
Greenstar 24Ri	8 – 24kW	
Greenstar CDi Conventional series		
Greenstar 30CDi Conventional	8 – 30kW	
Greenstar 40CDi Conventional	9.1 – 40kW	

Greenstar condensing regular boilers are also available as floorstanding models.
 See pages 21-22.

Solar compatibility

All Greenstar regular boilers can be used with a Worcester Greenskies Solar water heating system to provide hot water for your home (see pages 27 and 28).

Depending on the positioning of the Solar water heating panels, they could provide between 50-70% of your annual hot water free of charge from a sustainable source of energy.



How a Greenstar condensing **regular** system boiler fits into your home.



Worcester Greenstar condensing system boiler range.

Boiler	CH output	Solar compatible
Greenstar i System series		
Greenstar 12i System	4 – 12kW	
Greenstar 24i System	8 – 24kW	
Greenstar 30CDi System		
Greenstar 30CDi System	7.7 – 30kW	

Solar compatibility

All Greenstar system boilers can be used with a Worcester Greenskies Solar water heating system to provide hot water for your home (see pages 27 and 28).

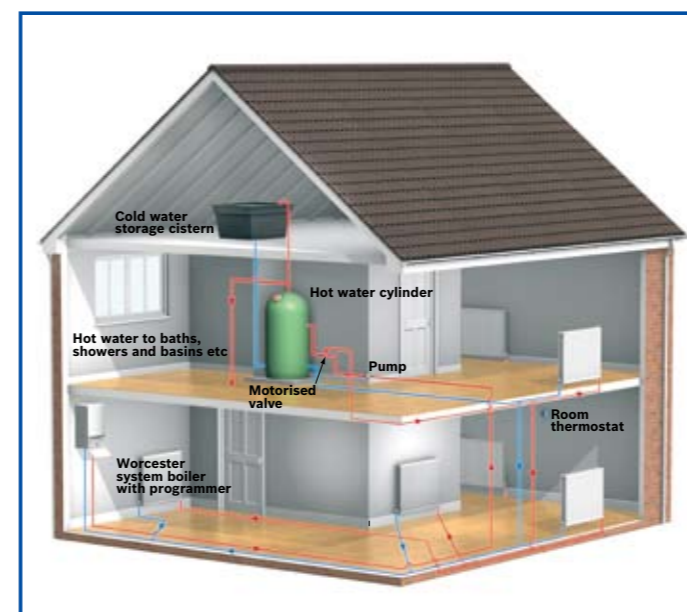
Optional controls†

Boiler	DT20 twin-channel digital programmer*	DT20RF RF thermostat with digital twin-channel programmer*	DT10RF digitalstat 24-hour programmable room thermostat*	DT10RF 7-day optimising digitalstat programmable room thermostat*	Intelligent system package
Greenstar i System series					
Greenstar 12i System	•	•	•	–	–
Greenstar 24i System	•	•	•	–	–
Greenstar 30CDi System					
Greenstar 30CDi System	•	•	•	•	•

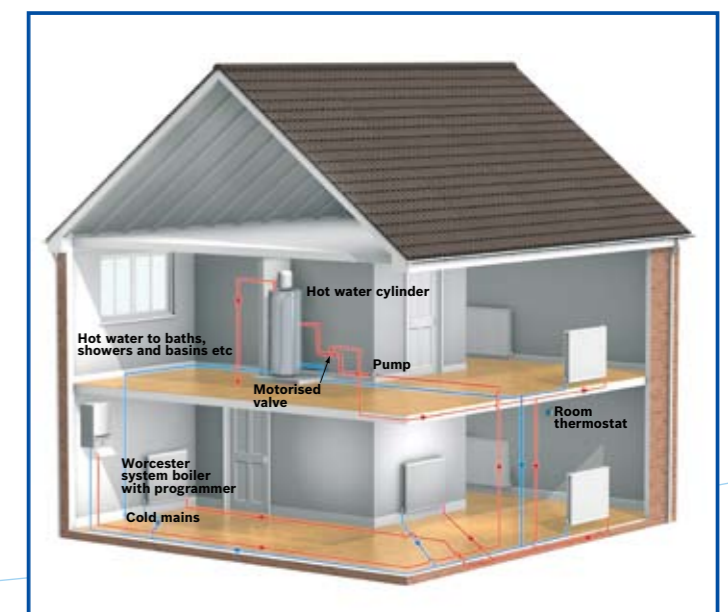
Depending on the positioning of the Solar water heating panels, they could provide between 50-70% of your annual hot water free of charge from a sustainable source of energy.

*Only when an optional internal diverter valve is used.

†See pages 23-24 for full details.



How a Greenstar condensing **system** boiler fits into your home. Here, with a low pressure hot water cylinder...

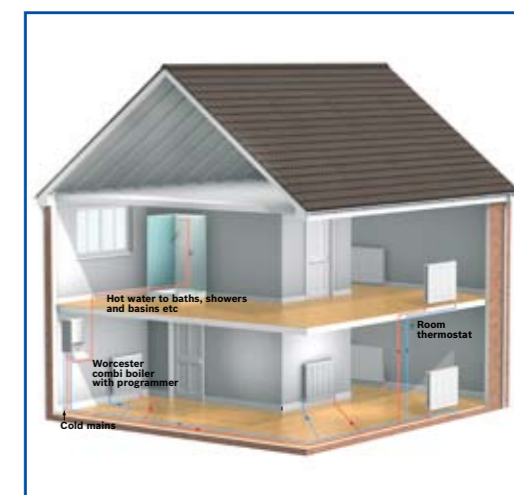


...and here with an unvented hot water cylinder. To find out more about both these systems, visit our website or speak to your local CORGI installer.



Worcester Greenstar condensing combi boiler range.

Boiler	CH output	Flow rate Litres per minute*
Wall hung models		
Greenstar i Junior series		
Greenstar 24i Junior	7.2 – 24kW	9.8
Greenstar 28i Junior	7.2 – 24kW	11.4
Greenstar Si series		
Greenstar 25Si	7.2 – 24kW	10.2
Greenstar 30Si	7.2 – 24kW	12.3
Greenstar CDi series		
Greenstar 27CDi	8 – 25kW	11.1
Greenstar 30CDi	8 – 30kW	12.7
Greenstar 37CDi	9.8 – 30kW	15.1
Greenstar 42CDi	9.8 – 30kW	17.2



How a Greenstar condensing **combi** system fits into your home.

*At 35°C Δ T

Greenstar condensing combi boilers are also available as floor standing models. See pages 21-22.

Optional controls†

Boiler	MT10 mechanical timer	DT20 twin-channel digital programmer	MT10RF mechanical RF thermostat	DT20RF RF thermostat with digital twin-channel programmer	D10RF digital 24-hour programmable room thermostat	DT10RF 7-day optimising digital programmable room thermostat	TD200 text-display programmer and RT10 room thermostat
Greenstar i Junior series							
Greenstar 24i Junior	•	•	•	•	–	–	–
Greenstar 28i Junior	•	•	•	•	–	–	–
Greenstar Si series							
Greenstar 25Si	•	•	•	•	•	–	–
Greenstar 30Si	•	•	•	•	•	–	–
Greenstar CDi series							
Greenstar 27CDi	•	•	•	•	•	•	•
Greenstar 30CDi	•	•	•	•	•	•	•
Greenstar 37CDi	•	•	•	•	•	•	•
Greenstar 42CDi	•	•	•	•	•	•	•

†See pages 23-24 for full details.



Worcester Greenstar floor standing boiler range.

Boiler	CH output	Solar compatible	Flow rate Litres per minute*
Greenstar FS series – regular			
Greenstar FS 30CDi Regular	8 – 30kW		–
Greenstar FS 42CDi Regular	11 – 40.8kW		–
Greenstar Highflow series – combi			
Greenstar Highflow 440CDi	8 – 30kW	–	20
Greenstar Highflow 550CDi	11 – 41.1kW	–	25

*At 35oC Δ T

Optional controls†

Boiler	MT10 mechanical timer	DT20 twin-channel digital programmer	MT10RF mechanical RF thermostat	DT20RF RF thermostat with digital twin-channel programmer	D10RF digital 24-hour programmable room thermostat	DT10RF 7-day optimising digistat programmable room thermostat	TD200 text display programmer and RT10 room thermostat
Greenstar FS series – regular							
Greenstar FS 30CDi Regular	–	–	–	–	–	–	–
Greenstar FS 42CDi Regular	–	–	–	–	–	–	–
Greenstar Highflow series – combi							
Greenstar Highflow 440CDi	•	•	•	•	•	•	•
Greenstar Highflow 550CDi	•	•	•	•	•	•	•

†See pages 23-24 for details.

Solar compatibility

All Greenstar regular boilers can be used with a Worcester Greenskies Solar water heating system to provide hot water for your home (see pages 27 and 28).

Depending on the positioning of the Solar water heating panels, they could provide between 50-70% of your annual hot water free of charge from a sustainable source of energy.

What control options are offered by Worcester?



There are three different types of control available to you: basic mechanical timer, digital and RF (radio frequency) controls (please see relevant product page for details).



MT10RF Mechanical RF (radio frequency) thermostat (for condensing combi boilers only)

Has an analogue display for setting night and day time periods and temperature. The receiver plugs into the boiler and is activated remotely by the RF (radio frequency) controller, which requires no wiring. So installation is clean and simple – no disturbance to floorboards or carpets. Nor is there any need for a separate room thermostat.



MT10 Mechanical timer (for condensing combi boilers only)

The simplest Worcester control device – an easy-to-use analogue clock for setting heating time periods. It plugs into the boiler fascia via a pre-prepared plug and socket.



DT20RF RF (radio frequency) thermostat with digital twin-channel programmer

As with the DT20, this features convenient automatic set-up and is very simple to operate. The timer plugs into the boiler and offers up to 3 different time periods a day, with the room thermostat (no separate thermostat required) providing the temperature control. This device also has all the no-wiring benefits of the MT10RF. Twin-channel function: when used with a Greenstar condensing system boiler, the second channel gives you 3 time periods for hot water. If used with a Greenstar condensing combi boiler, it times the keep hot function.



TD200 text display programmer and RT10 room thermostat (for Greenstar CDi combi boilers only)

The TD200 is an advanced plug in 7-day programmer which features automatic time and date set-up, automatic summer-time/winter-time changeover, and full easy-to-use text display (backlight for low light conditions) which provides more information than standard digital controls. You can set 3 on-off periods per day and the programmer's effectiveness is further enhanced by the RT10 room thermostat which gives optimum room temperature control. The digital display shows both the current and your desired (set) temperature. An advance button allows you to move on to the TD200's next heating switch point. An optional wall-mounting socket is available, enabling the TD200 to be positioned away from the boiler if required.



DT10RF 7-day optimising Digistat programmable room thermostat (for Greenstar Si and CDi combis and CDi system boilers using the optional built-in diverter valve)

A sophisticated energy-saving device which automatically maintains a range of temperatures to avoid the wasteful hot-cold-hot-cold cycle. Also features an energy-saving optimum start, calculating when it needs to fire the boiler to precisely achieve the required temperature at the required time each day. You can set different temperatures for up to 6 different time periods for each day of the week individually. As an RF (radio frequency) device it has the additional benefits of no wiring required. Nor is a separate thermostat necessary.



DT10RF Digistat 24-hour programmable room thermostat (for all Greenstar combis and system boilers using the optional built-in diverter valve)

A 24-hour programmable room thermostat (which means your time settings remain the same for every day), with the ability to set different temperatures for up to 6 different time periods. No separate room thermostat is required and all the major benefits of no wiring required apply. This also helps you to comply with Buildings Regulations Best Practice, as programmable room thermostats can make even further savings over more traditional room thermostats and timers.



DT20 Twin-channel digital programmer

Plugs into the boiler fascia panel and sets automatically to current time, date and day, and adjusts automatically as appropriate in line with British summer time. There are 3 time periods for both heating and hot water (separately). Use either the pre-set programme built in, or choose your own settings.



Intelligent System Package (for Greenstar 30CDi system boiler only)

The ultimate but easy-to-use control solution, this optional intelligent system upgrade is a combination of the TD200 text display 7-day programmer and RT10 room thermostat with a built-in diverter valve.

Add effective controls to your heating system and you can dramatically reduce the amount of fuel you use – and the amount you pay. Worcester has a wide range of controls, from mechanical devices to sophisticated digital and wireless systems. So whichever Worcester Greenstar boiler you choose, you can add controls that will suit you and your home.

The Greenstar condensing Gas boiler range specification and features.

	REGULAR								SYSTEM				COMBINATION									
	12Ri	15Ri	18Ri	24Ri	30CDi Conventional	40CDi Conventional	FS 30CDi Regular	FS 42CDi Regular	12i System	24i System	30CDi System	24i Junior	28i Junior	23Si	30Si	27CDi	30CDi	37CDi	42CDi	Highflow 440 CDi	Highflow 550 CDi	
Wall hung (w) Floor standing (F)	W	W	W	W	W	W	F	F	W	W	W	W	W	W	W	W	W	W	W	F	F	
Height (mm)	600	600	600	600	760	760	850	850	710	710	760	710	710	710	710	760	760	760	760	850	850	
Width (mm)	390	390	390	390	440	440	400	400	400	400	440	400	400	400	400	440	440	440	440	600	600	
Depth (mm)	270	270	270	270	360	360	600	600	330	330	360	330	330	330	330	360	360	360	360	600	600	
DHW flow rate @ 35°C ΔT	N/A	N/A	N/A	N/A	N/A	N/A	N/A	N/A	N/A	N/A	N/A	9.8	11.4	10.2	12.3	11.1	13.1	15.1	17.2	20	25	
CH output (kW)	4-12	5-15	6-18	8-24	8-30	9.1-40	7.7-30	9.6-40.8	4-12	8-24	7.7-30	7.2-24	7.2-24	7.2-24	7.2-24	8.0-25	7.2-24	9.8-30	9.8-30	7.4-29.2	9.7-30.6	
Multi-directional fluing LH, RH, rear & vertical	
Maximum horizontal flue length (mm) (inc terminal)	100mm 4000 125mm 13000	100mm 4000 125mm 13000	100mm 4000 125mm 13000	100mm 4000 125mm 13000	100mm 4000 7900 125mm 18500	100mm 4000 2800 125mm 12500	100mm 4000 4000 125mm 13000	100mm 4000 4600 125mm 13000	100mm 4000 4600 125mm 13000	100mm 4000 4600 125mm 13000	100mm 4000 4600 125mm 13000	100mm 4000 4600 125mm 13000	100mm 4000 4600 125mm 13000	100mm 4000 4600 125mm 13000	100mm 4000 4600 125mm 13000	100mm 4000 4600 125mm 13000	100mm 4000 4600 125mm 13000	100mm 4000 4600 125mm 13000	100mm 4000 4600 125mm 13000	100mm 4000 4600 125mm 13000	100mm 4000 4600 125mm 13000	
Maximum vertical flue length (mm) (inc terminal)	100mm 6400 125mm 15000	100mm 6400 125mm 15000	100mm 6400 125mm 15000	100mm 6400 125mm 15000	100mm 6400 7400 125mm 16500	100mm 6400 2900 125mm 14000	100mm 6400 4000 125mm 13000	100mm 6400 4000 125mm 13000	100mm 6400 4000 125mm 15000	100mm 6400 4000 125mm 15000	100mm 6400 4000 125mm 15000	100mm 6400 4000 125mm 15000	100mm 6400 4000 125mm 15000	100mm 6400 4000 125mm 15000	100mm 6400 4000 125mm 15000	100mm 6400 4000 125mm 15000	100mm 6400 4000 125mm 15000	100mm 6400 4000 125mm 15000	100mm 6400 4000 125mm 15000	100mm 6400 4000 125mm 15000	100mm 6400 4000 125mm 15000	
Modulation of CH and DHW	CH only	CH only	CH only	CH only	CH only	CH only	CH only	CH only	CH only	CH only	CH only	
Electronic ignition
Built-in bypass	N/A	N/A	N/A	N/A	N/A	N/A	N/A	N/A	
Built-in filling link	N/A	N/A	N/A	N/A	N/A	N/A	N/A	N/A	Optional	Optional	Optional	Optional	Optional	Optional	Optional	
Built-in frost thermostat	
Optional wireless room thermostats	N/A	N/A	N/A	N/A	N/A	N/A	N/A	N/A	¹	¹	¹	
Pipes behind boiler	
Ventilation free compartment installation	
Natural gas SEDBUK number (%)	90.1%	90.1%	90.1%	90.2%	90.3%	90.2%	90.5%	90.3%	90.1%	90.2%	90.3%	90.1%	90.1%	90.1%	90.1%	90.2%	90.2%	90.2%	90.2%	90.8%	91%	
LPG version	[†]	[†]	[†]	[†]	[†]	[†]	[†]	[†]	[†]	[†]	[†]	[†]	[†]	[†]	
LPG SEDBUK number (%)	90.1%	90.1%	90.1%	90.2%	92.3%	92.0%	91.9%	91.6%	90.1%	90.2%	92.3%	90.1%	90.1%	90.1%	90.1%	92.2%	92.2%	92.2%	92.2%	91.8%	91.8%	
Fault finding diagnostics	
Pre-plumbing jig	N/A	N/A	N/A	N/A	

NOTE: This matrix is for a guide only. Full technical details are available within the Technical and Specification brochures for these products.

¹Only when an optional built-in diverter valve is used
^{*}No bypass required
[†]With conversion kit

Worcester. At your service.



“Worcester is here to help, from choosing your boiler to keeping it maintained.”

A helping hand – even after installation

We’re always on hand to help, whether you’re just starting to think about buying a Worcester boiler, or you’ve owned one for years. We have over 300 Service Engineers to ensure your products deliver energy-saving performance year after year. Our experienced and award-winning technical support team are also available on the phone or online to offer help with any aspect of your Worcester boiler. They can help with choosing the right controls, as well as advising on combining your boiler with environmentally-friendly, cost-saving renewable systems like Solar water heating panels.

Warranties for extra peace of mind

To give you even more reassurance, we offer warranties on all our products. To find out more, visit www.worcester-bosch.co.uk

Find an installer

Of course, a qualified installer is always the best source of advice, and we’ll help you find a Worcester Accredited Installer who’s local to you. Just call 08457 256 206, or visit us at www.worcester-bosch.co.uk/findaninstaller

Worcester comes top of Which? customer service survey

We have worked hard to ensure our customer care is of the highest quality. So we’re pleased to know that Which? think our efforts have paid off. They asked over 4,000 Which? members whether they were satisfied with their boiler cover. The result: ‘The winner by far was Worcester, which was rated highly for customer care and value for money.’



Worcester Greenskies Solar water heating panels. The award-winning way to save energy and reduce bills.

To get up to 70% of your hot water free – and to make more of a positive impact on the environment – combine our Greenstar boilers with Greenskies Solar water heating panels panel. It's the future of home heating – and it's here today.



Our high-efficiency Greenstar boilers are helping cut the amount of fossil fuels we use to heat our homes. But we're committed to doing even more for the environment.

Our range of alternative systems is growing all the time as we develop products that use renewable, sustainable sources of energy to provide you with hot water and heating all year round.

Solar savings

To add to the savings on fuel costs a Greenstar boiler can deliver – and to make even less of an impact on the environment – combine it with a Greenskies Solar water heating panels. They can save up to 70% of your hot water costs using the energy from the sun.

It works alongside your existing system (regular and system boilers only) seamlessly, and is highly efficient, completely controllable and very easy to maintain.

Works come rain or shine

Greenskies Solar water heating panels do not rely on high temperatures or direct sunlight to work. Even on cloudy days, they can deliver significant energy savings. That's because they work on the principle of light absorption, rather than needing heat or direct sunlight.

Planning permission now simpler

Unless your home is a listed building or in a conservation area, planning permission for Solar water heating panels is no longer required.

Up to £400 cashback on installation

Through the government's Low Carbon Buildings programme, you can apply for a grant of £400 to help with the cost of installation. To find out more, visit www.lowcarbonbuildings.org.uk

Pay just 5% VAT

The Low Carbon Buildings programme also entitles you to a reduction of the VAT you pay for installing renewable heating and hot water systems. Install Greenskies Solar water heating panels and you pay just 5% VAT – a saving of 12.5%.

Worcester Greenskies Solar water heating panels. Voted CORGI's Energy Efficient Product of the Year, 2007 and 2008 and OFTEC Green Product of the Year 2008.

Heat pumps from Worcester.

More innovative ways to save energy and money.

Ground source heat pumps

Worcester has been leading the way in alternative heating and hot water systems for many years – as demonstrated by Greenstore ground source heat pumps.

The ground source heat pump can meet your total heating and hot water needs by using the heat energy stored in the earth. The principle is simple and the result is low-cost comfortable heating that uses sustainable energy and causes no direct emissions or other damage to the environment. There's no need for a boiler, and once installed, you need never pay another gas bill.*

Government grants

The government's Low Carbon Buildings program offers a grant of up to £1,200 towards the cost of a heat pump installation. To find out more, visit www.lowcarbonbuildings.org.uk

A system to suit every property

Greenstore ground source heat pumps can be used with a range of collectors, allowing the flexibility to fit in most gardens. The collector pipe is installed under the ground on your property. Ask your Worcester Accredited Installer for more information.

To see if ground source heat pumps are suitable for your property, use our "Would ground source heat pumps suit my property?" function on our website at www.worcester-bosch.co.uk

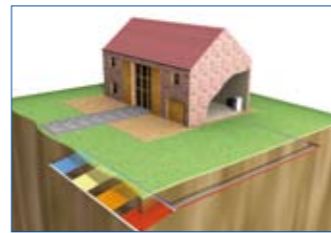


Ground source heat pump

Methods of collection



Horizontal collector



Compact collector



Bore hole collector

£2000
cashback

on Greenstore ground
source heat pumps
until end of 2009

See website for more details



Air to air heat pump

Air to water and air to air heat pumps

These clever devices are used extensively in Scandinavia and use latent energy stored in the air to generate useable heat.

The Greensource air to water heat pump heats water up to 65°C for use in baths, showers and radiators – although it's especially ideal for underfloor heating systems.

The air to air version of Greensource needs no radiators or additional components. A unit on the outside of your home draws air in, and the internal unit provides heat. It can also deliver cool air during the summer, while Active Ion Technology purification makes it ideal for allergy sufferers.



Air to water heat pump

Though powered by electricity, Greensource heat pumps could produce up to 5 units of energy for every 1 used – making them very fuel- and cost-efficient.

Find out more about Worcester's renewable technology solutions at our Energy Houses website.

www.worcester-bosch.co.uk/energyhouses



Air to water indoor unit

"The Worcester renewables range has an energy-saving, sustainable solution for everyone, no matter where they live."

*Electricity is used to run ground source heat pumps.